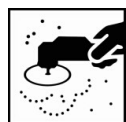


VPT-24 PRE-TREATMENT CUT THRU WIPE

Chromium Free conversion coating packaged in ready-to-use single application packaging. VPT-24 Pre-Treatment Cut Thru Wipes produce a conversion coating forming chemical bonds with metal surfaces enhancing adhesion and corrosion resistance of applied paints and paint systems.

**SAFETY CONSIDERATIONS**

- Use suitable personal protection.

**SURFACE ABRADING**

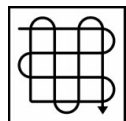
- Thoroughly prepare the surface for application of the product.

**SURFACE CLEANING**

- The surface must be clean before application.
- Use suitable surface cleaners and technique to ensure a clean surface.

**APPLICATION**

- Hand apply the pre-treatment solution using a 50-75% overlap motion.
- Apply a double wipe application, this could be a vertical and then immediately with a horizontal stroke motion.
- Complete wetting (sheeting) of the metal surface is necessary to allow the solution to react with the base metal.

**DRYING**

- Allow to dry at ambient air temperature.
 - After one minute, drying may be accelerated with low velocity, warm, clean air.

**RECOATING**

- Recoatable with all Valorem undercoats
 - Use a tack cloth before continuing with the surfacer or sealer.
 - Do not apply polyester body fillers.

Read the complete TDS and the product Safety Data Sheet (SDS) for detailed product information

VPT-24 PRE-TREATMENT CUT THRU WIPE**DESCRIPTION**

Chromium Free conversion coating packaged in ready-to-use single application packaging. VPT-24 Pre-Treatment Cut Thru Wipes produce a conversion coating forming chemical bonds with metal surfaces enhancing adhesion and corrosion resistance of applied paints and paint systems.

**PRODUCT ASSORTMENT**

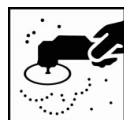
- Valorem VPT-24 Pre-Treatment Cut Thru Wipe – Item # 2013684
- Stock unopened or used products in approved closed containers with proper labelling. Store in moderate temperatures. Optimum storage temperature is approximately 70°F (21°C). Avoid too much temperature fluctuation. The maximum temperature range for storage is 40°F - 95°F (5°C – 35°C).
- Refer to price sheet for the most up-to-date shelf-life information.

**BASIC RAW MATERIALS****Product**

Valorem VPT-24 Pre-Treatment Cut Thru Wipe – Fluoride compounds and additional reactive ingredients.

**SUBSTRATE PREPARATION****Pre-Cleaning**

- The surface must be dry and free from grease, oil and other foreign matter contaminants.
 - ✓ Use suitable surface cleaners and technique to ensure a clean, contaminant-free surface.

**Surface Abrading**

- Steel – P120 grit dry or red scuff pad
- Galvanized Steel – P180 – P220 grit dry or red scuff pad
- Stainless Steel – P180 grit dry
- Aluminum – P180 – P220 grit dry or red scuff pad

**Final-Cleaning**

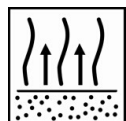
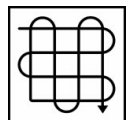
- The surface must be dry and free from grease, oil and other foreign matter contaminants.

**PACKAGING**

- To avoid drying out of the towel, make sure the individual package is not opened until ready for use.
- Partially used towel may be stored in a sealed plastic bag or container if not completely used or contaminated.

VPT-24 PRE-TREATMENT CUT THRU WIPE**APPLICATION**

- Hand apply the pre-treatment solution using a 50-75% overlap motion.
- Apply a double wipe application, this could be a vertical and then immediately with a horizontal stroke motion.
- Complete wetting (sheeting) of the metal surface is necessary to allow the solution to react with the base metal.

**CONVERSION PROCESS**

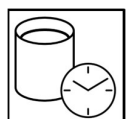
- The surface should remain wet with the pre-treatment solution for 1 minute to form a conversion coating with the bare metal.
- Bare substrate color change indicates proper application once drying period has been completed.

**DRYING**

- Allow complete drying of the pretreated surface at ambient air temperature.
- If desired, the use of warm and clean forced air (at low velocity) can be used to accelerate drying.

**RECOATING**

- Recoat time is 8 hours, maximum. If more than 8 hours has elapsed, surface clean and reapply before continuing.
- Recoatable with all Valorem undercoats.
- Normal surface cleaning is sufficient prior to priming.
- Use a tack cloth before continuing with the surfacer or sealer.
- **Do not** apply polyester body fillers directly to metal coated with the VPT-24 Pre-Treatment Cut Thru Wipe.

**DISPOSAL**

- After the towels are dry, they may be disposed through regular solid waste services. Once dry, the chemicals become inert and cannot be regenerated.

**VOC / REGULATORY INFORMATION**

Notice: Do not handle until the Safety Data Sheets have been read and understood. Refer to the SDS for Valorem VPT-24 Pre-Treatment Cut Thru Wipes to review the most current safety and regulatory information. Accessible on the internet at : <https://my.anaac.net/>

VPT-24 PRE-TREATMENT CUT THRU WIPE

AkzoNobel Inc., North America
Address: 1845 Maxwell Street – Troy, MI USA
Tel: 800.618.1010

FOR PROFESSIONAL USE WITH SUITABLE HSE EQUIPMENT

IMPORTANT NOTE The information in this data sheet is not intended to be exhaustive and is based on the present state of our knowledge and on current laws: any person using the product for any purpose other than that specifically recommended in the technical data sheet without first obtaining written confirmation from us as to the suitability of the product for the intended purpose does so at his own risk. It is always the responsibility of the user to take all necessary steps to fulfill the demands set out in the local rules and legislation. Always read the Safety Data Sheet and the Technical Data Sheet for this product if available. All advice we give or any statement made about the product by us (whether in this data sheet or otherwise) is correct to the best of our knowledge but we have no control over the quality or the condition of the substrate or the many factors affecting the use and application of the product. Therefore, unless we specifically agree in writing otherwise, we do not accept any liability whatsoever for the performance of the product or for any loss or damage arising out of the use of the product. All products supplied and technical advices given are subject to our standard terms and conditions of sale. You should request a copy of this document and review it carefully. The information contained in this data sheet is subject to modification from time to time in the light of experience and our policy of continuous development. It is the user's responsibility to verify that this data sheet is current prior to using the product.

Coatings brand names mentioned in this data sheet are trademarks of or are licensed to AkzoNobel.

Head Office

AkzoNobel Car Refinishes B.V., PO Box 3, 2170 BA Sassenheim, The Netherlands